

PISTON DIAPHRAGM PUMPS

- ▼ **Increased efficiency**
no air in the pumped material
- ▼ **Low investment costs**
the optimum with regard to capacity / output
initial costs and operating costs
- ▼ **Compact model**
small outer dimensions,
higher capacity / output
- ▼ **Big sectional area,
reduced flow speed**
a guarantee for low wear
- ▼ **Aim of development:**
Increased capacity / output, compacter type of
construction, improved efficiency at reduced
costs, without a loss of durability and service
life.
- ▼ **The result:**
the new „MS“ –model (**Modern – System!**)
This production series meets the itemized
requirements and is suited for capacities of
0,5 – 120 m³/h.
- **Constructional features:**
 - Pump head made of **electrically
conductive polypropylene
conforming to ATEX-directions**
 - Electrically driven,
modular piston diaphragm pump
 - Diaphragm pulsation dampener
 - Double diaphragm
 - Designed for 1,6 MPa (16 bar)
 - Temperature of pumped material: up to 80°C

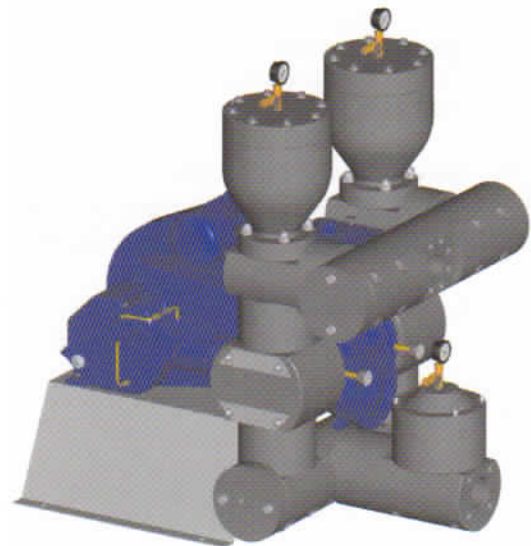
model "ATEX-MS"

explosion-proof according
direction 94/9/EG (ATEX)

CE Ex II 2G c k X



Picture 1 single-acting



Picture 2 double-acting

